

\$114,900 - 7119 36 Street, Lloydminster

MLS® #A2153523

\$114,900

0 Bedroom, 0.00 Bathroom,
Land on 0.16 Acres

Parkview Estates, Lloydminster, Alberta

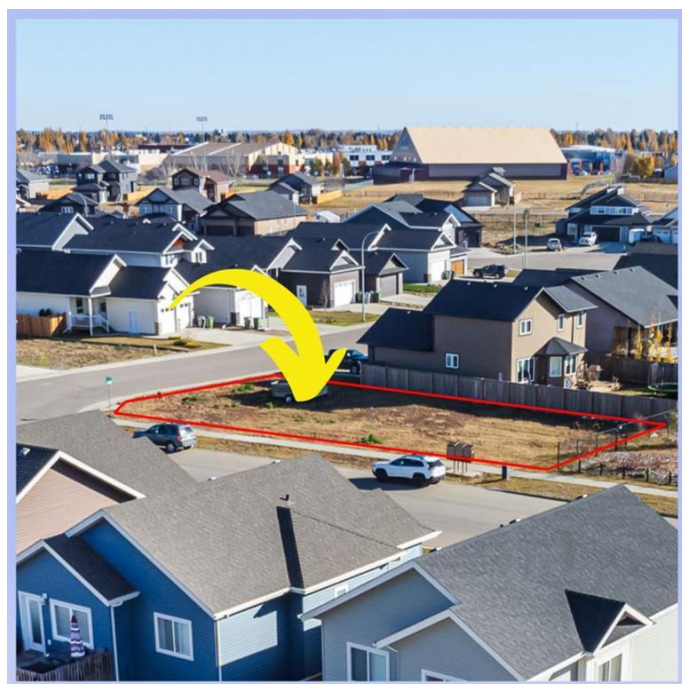
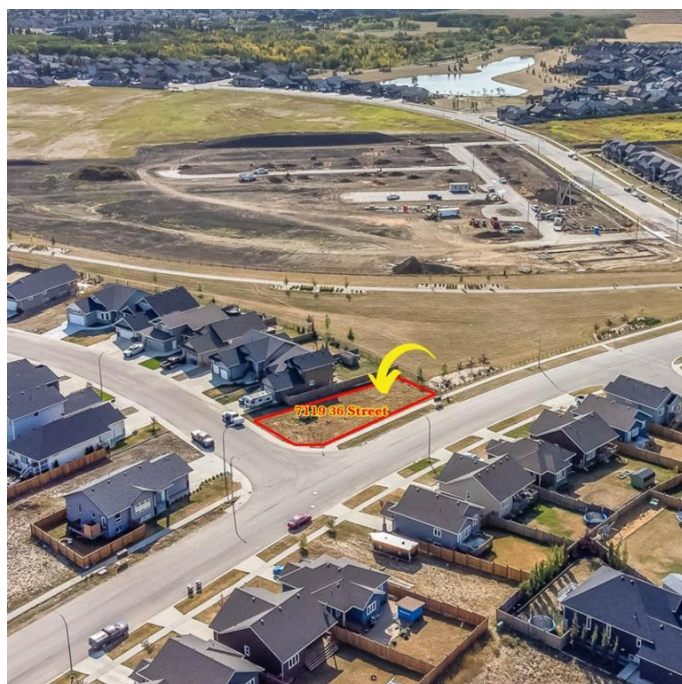
The perfect location to build your new home!
This south facing backyard lot ensures maximum privacy in your backyard as the lot backs up against a large green space - you will have no rear yard neighbors backing directly on to your new home. This large irregular shaped corner lot features 6855 square feet of space and is irregular in shape. Lots of different options for you to build your new home. Create RV parking in the backyard with access off 72 Ave... One neighbor instead of two is a bonus. Add to this the fact you back out of your driveway into the crescent mean you will hardly ever need to wait for traffic. Exceptionally priced and ready to build on.

Essential Information

MLS® #	A2153523
Price	\$114,900
Bathrooms	0.00
Acres	0.16
Type	Land
Sub-Type	Residential Land
Status	Active

Community Information

Address	7119 36 Street
Subdivision	Parkview Estates
City	Lloydminster
County	Lloydminster



Province	Alberta
Postal Code	T9V 3P9

Exterior

Lot Description	Corner Lot, Backs on to Park/Green Space
-----------------	--

Additional Information

Date Listed	July 29th, 2024
Days on Market	266
Zoning	R1

Listing Details

Listing Office	MUSGRAVE AGENCIES
----------------	-------------------

Data is supplied by Pillar 9â„¢ MLS® System. Pillar 9â„¢ is the owner of the copyright in its MLS® System. Data is deemed reliable but is not guaranteed accurate by Pillar 9â„¢. The trademarks MLS®, Multiple Listing Service® and the associated logos are owned by The Canadian Real Estate Association (CREA) and identify the quality of services provided by real estate professionals who are members of CREA. Used under license.