

# \$685,000 - 601 Edgefield Gate, Strathmore

MLS® #A2186540

**\$685,000**

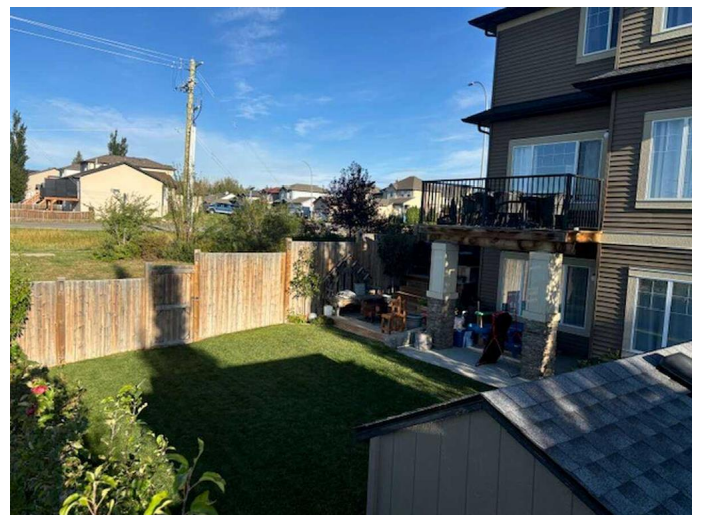
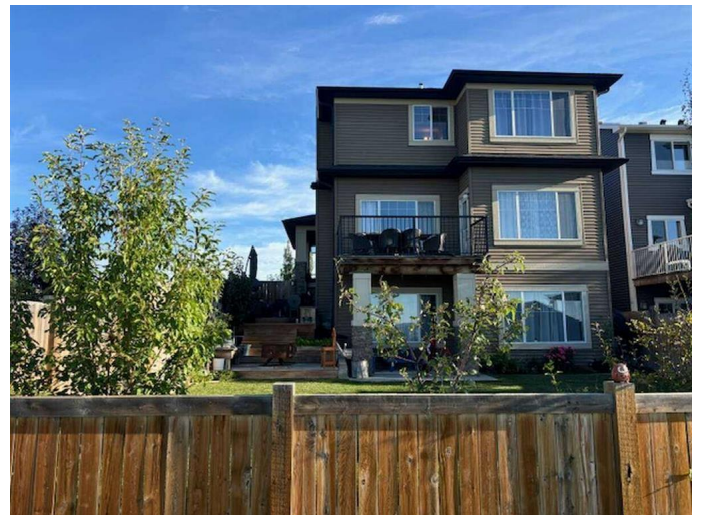
4 Bedroom, 4.00 Bathroom, 2,002 sqft

Residential on 0.11 Acres

Edgefield, Strathmore, Alberta

For more information, please click Brochure button.

Fully finished 2002 sqft 2 story walkout with 3 bedrooms up and 1 down for a total of 2706 sqft of living space. The main floor has a 2-story foyer, laundry room, half bath, walk-in closet for seasonal clothing and open concept living, kitchen and dining room with a gas fireplace. Upstairs has a bonus room, full bath for the 2 secondary bedrooms, linen closet and the master suite. The master suite has a generous ensuite with custom walk-in closet and feature wall. The fully finished walkout basement consists of a full custom bathroom with in-floor heat, storage room with shelving and furnace room. The basement living room has custom walnut shelving accents and a large bedroom with double barn door entrance and walk-in closet. All basement flooring and accent tile matches on all 3 floors. The finished double garage has huge ceiling height with built in overhead storage along with a Lennox gas heater (2021) and the driveway has been widened to allow 3 parked cars. This home also has central A/C (2021) and a new oversize H/E gas water heater installed (2023). This home has large south facing windows on all 3 levels allowing a bright atmosphere and views of the open landscape behind this subdivision. Edgefield has a newly built K-9 school and public sports center which is a short 1 block walk away. The outside yard is well manicured with fruit and zone appropriate trees and flower beds. There is a well finished



12x10 garden shed and over 2500 L of rain catch containers plumbed into downspouts. The walkout level has a poured concrete patio and a custom 3 tier deck along the side of house which ties into the front wrap around covered porch, perfect for the summer BBQâ€™s and lounging. Original owners since newly built in 2014 and has been a 100% no pet home. One of a kind!

Built in 2014

### **Essential Information**

MLS® #	A2186540
Price	\$685,000
Bedrooms	4
Bathrooms	4.00
Full Baths	3
Half Baths	1
Square Footage	2,002
Acres	0.11
Year Built	2014
Type	Residential
Sub-Type	Detached
Style	2 Storey
Status	Active

### **Community Information**

Address	601 Edgefield Gate
Subdivision	Edgefield
City	Strathmore
County	Wheatland County
Province	Alberta
Postal Code	T1P 0E9

### **Amenities**

Parking Spaces	5
Parking	Double Garage Attached, Parking Pad
# of Garages	2

## Interior

Interior Features	Kitchen Island, No Animal Home, Open Floorplan, Stone Counters, Double Vanity, Vinyl Windows, Soaking Tub, Storage, Walk-In Closet(s)
Appliances	Dishwasher, Garage Control(s), Microwave, Refrigerator, Washer/Dryer, Window Coverings, Built-In Range, Built-In Oven, Humidifier, Range Hood
Heating	Central, Natural Gas
Cooling	Central Air
Fireplace	Yes
# of Fireplaces	1
Fireplaces	Gas
Has Basement	Yes
Basement	Exterior Entry, Full, Finished

## Exterior

Exterior Features	Rain Barrel/Cistern(s), Storage
Lot Description	Back Yard, Corner Lot, Fruit Trees/Shrub(s), Front Yard, Lawn, Landscaped, No Neighbours Behind, Sloped, Yard Drainage
Roof	Fiberglass
Construction	Vinyl Siding, Wood Frame, Stone
Foundation	Poured Concrete

## Additional Information

Date Listed	January 9th, 2025
Days on Market	87
Zoning	R2

## Listing Details

Listing Office	Easy List Realty
----------------	------------------

Data is supplied by Pillar 9â„¢ MLSÂ® System. Pillar 9â„¢ is the owner of the copyright in its MLSÂ® System. Data is deemed reliable but is not guaranteed accurate by Pillar 9â„¢. The trademarks MLSÂ®, Multiple Listing ServiceÂ® and the associated logos are owned by The Canadian Real Estate Association (CREA) and identify the quality of services provided by real estate professionals who are members of CREA. Used under license.