

\$555,000 - 240 30 Avenue Ne, Calgary

MLS® #A2194227

\$555,000

5 Bedroom, 2.00 Bathroom, 1,140 sqft

Residential on 0.07 Acres

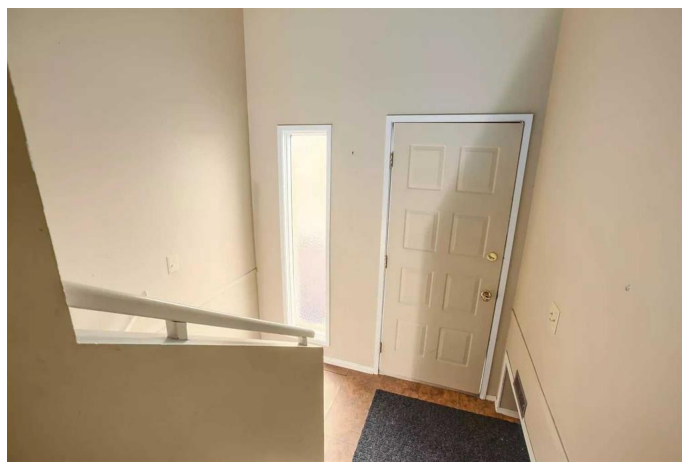
Tuxedo Park, Calgary, Alberta

Located across from Tuxedo Park and an expansive green space, this 1/2 duplex offers 2 fully rented legal suites. Upstairs is a self contained unit with 3 bedrooms, 1 full bathroom and laundry. The principal areas of the main floor are well sized including a family sized kitchen, adjacent dining room and large living room with wood burning fireplace. The lower legal suite is also private and self contained with large principal rooms, 2 bedrooms + den/storage, full bathroom and full sized laundry. This property is in an ideal location, with easy access to centre street and 4th street, downtown, the airport and a multitude of amenities, shops and services. Most photos provided are from before tenants resided in the home.

Built in 1983

Essential Information

MLS® #	A2194227
Price	\$555,000
Bedrooms	5
Bathrooms	2.00
Full Baths	2
Square Footage	1,140
Acres	0.07
Year Built	1983
Type	Residential
Sub-Type	Semi Detached



Style	Side by Side, Bi-Level
Status	Active

Community Information

Address	240 30 Avenue Ne
Subdivision	Tuxedo Park
City	Calgary
County	Calgary
Province	Alberta
Postal Code	T2E 2C9

Amenities

Parking Spaces	2
Parking	Off Street

Interior

Interior Features	Storage
Appliances	Dishwasher, Dryer, Refrigerator, Stove(s), Washer
Heating	Forced Air
Cooling	None
Fireplace	Yes
# of Fireplaces	1
Fireplaces	Wood Burning
Has Basement	Yes
Basement	Finished, Full, Suite

Exterior

Exterior Features	None
Lot Description	Back Lane, Back Yard, Front Yard, Rectangular Lot
Roof	Asphalt
Construction	Stucco
Foundation	Poured Concrete

Additional Information

Date Listed	February 13th, 2025
Days on Market	64
Zoning	R-CG

Listing Details

Data is supplied by Pillar 9â„¸ MLSÂ® System. Pillar 9â„¸ is the owner of the copyright in its MLSÂ® System. Data is deemed reliable but is not guaranteed accurate by Pillar 9â„¸. The trademarks MLSÂ®, Multiple Listing ServiceÂ® and the associated logos are owned by The Canadian Real Estate Association (CREA) and identify the quality of services provided by real estate professionals who are members of CREA. Used under license.