

\$545,000 - 126 Belvedere Crescent Se, Calgary

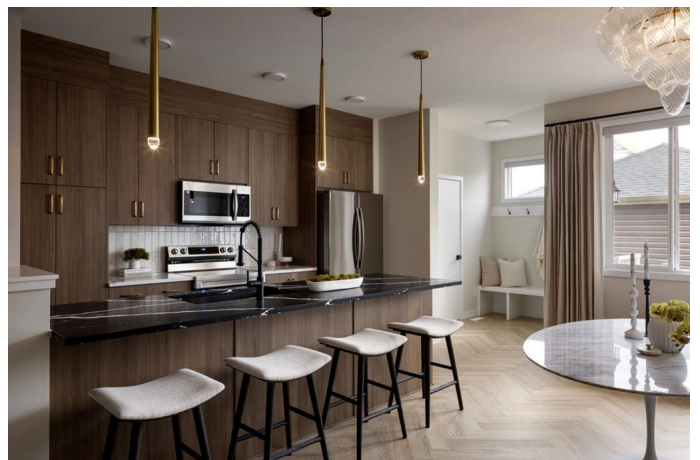
MLS® #A2207039

\$545,000

3 Bedroom, 3.00 Bathroom, 1,504 sqft
Residential on 0.06 Acres

Belvedere., Calgary, Alberta

*Visit show home at 318 sora way SE Calgary mon-thurs 4-7pm, sat/sunday 2-5pm. Self guided tours available outside those times!
HALF DUPLEX "TALO" Floorplan, with 3 bed/2.5 bath + Bonus by 'Rohit Homes' - an award winning home builder for over 35 years.
FEATURING: | SEPARATE ENTRANCE | LARGE WINDOWS | CONCRETE PARKING PAD | BRAND NEW | All Perfectly located In SE Calgary's 'Sora in Hotchkiss', close to a park, featuring a pond, paths, easy access to major highways and more. Step inside to an expansive open floor plan that seamlessly connects living/dining and kitchen. KITCHEN FEATURES: SS appliances, quartz counters, large island (with place for bar stools), cabinets to ceiling (42' tall), boutique lighting - a perfect place to gather and create masterful meals. Off the kitchen is the dining, mid room and half bath. The TALO plan offers windows across the back and front, and with the high ceilings as well as open floor plan, it leaves the home feeling bright and inviting. Upstairs, find 3 good size bedrooms, bonus room, laundry, 2 full baths. The primary retreat includes a walk in closet, and spa like retreat full en-suite. Ensuite features: Single vanity, window, bath/shower combo with rain head and wand, quartz counters and beautiful tile work. The lot features alley access in the back to a concrete parking pad (double).. This home is packed with features that make it a great option to consider for your next home purchase. Located just outside the ring-road, east of



Stoney Trail, offering quick access to highways and other amenities on the southeast side of Calgary. All pictures and 3D tours are of the 'TALO' floorpan that is completed, your unit may have different (colors/finishings/spec upgrades/design interior/elevation) depending on Lot - confirm with builder. Get moving on this brand new place - before it's gone! *Visit show home at 318 sora way SE Calgary mon-thurs 4-7pm, sat/sunday 2-5pm. Self guided tours available outside those times!

Built in 2025

Essential Information

MLS® #	A2207039
Price	\$545,000
Bedrooms	3
Bathrooms	3.00
Full Baths	2
Half Baths	1
Square Footage	1,504
Acres	0.06
Year Built	2025
Type	Residential
Sub-Type	Semi Detached
Style	2 Storey, Side by Side
Status	Active

Community Information

Address	126 Belvedere Crescent Se
Subdivision	Belvedere.
City	Calgary
County	Calgary
Province	Alberta
Postal Code	t2a7g2

Amenities

Amenities	Other, Park, Playground
Parking Spaces	2

Parking Alley Access, Parking Pad

Interior

Interior Features High Ceilings, Kitchen Island, Open Floorplan, Quartz Counters, Separate Entrance

Appliances Dishwasher, Electric Stove, Microwave Hood Fan, Refrigerator, Washer/Dryer

Heating Forced Air

Cooling None

Has Basement Yes

Basement Exterior Entry, Full, Unfinished

Exterior

Exterior Features Other, Private Entrance

Lot Description Back Yard, Corner Lot, Landscaped, Rectangular Lot

Roof Asphalt Shingle

Construction Wood Frame

Foundation Poured Concrete

Additional Information

Date Listed March 30th, 2025

Days on Market 11

Zoning r-g

Listing Details

Listing Office RE/MAX Real Estate (Mountain View)

Data is supplied by Pillar 9â„¢ MLSÂ® System. Pillar 9â„¢ is the owner of the copyright in its MLSÂ® System. Data is deemed reliable but is not guaranteed accurate by Pillar 9â„¢. The trademarks MLSÂ®, Multiple Listing ServiceÂ® and the associated logos are owned by The Canadian Real Estate Association (CREA) and identify the quality of services provided by real estate professionals who are members of CREA. Used under license.