

\$549,900 - 48 Sundown Court Sw, Medicine Hat

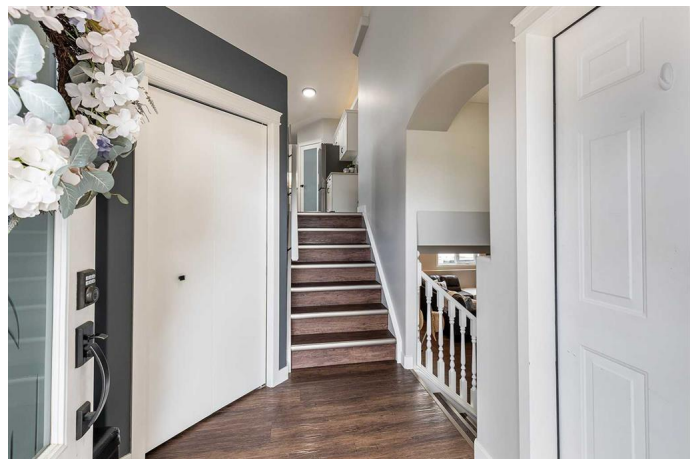
MLS® #A2212255

\$549,900

4 Bedroom, 3.00 Bathroom, 1,380 sqft
Residential on 0.10 Acres

SW Southridge, Medicine Hat, Alberta

Welcome to this stunning and extensively upgraded bi-level home, perfectly situated in a quiet, sought-after court location. From the moment you step inside, you'll appreciate the care and quality that has gone into every detail of this immaculate property. The spacious open-concept main floor features vaulted ceilings, stylish vinyl plank flooring, and a beautifully updated kitchen complete with crisp white cabinetry, a warm wood-tone island, quartz countertops, and stainless steel appliances (new in 2024!). Thoughtfully selected lighting and modern finishes enhance the inviting ambiance throughout. The bright living area offers plenty of room for furniture and is open to the kitchen/dining area, making it the perfect layout for entertaining. The dining area offers direct access to the covered deck - the ideal entertaining or relaxation space. The primary bedroom suite is complete with a walk-in closet and four piece bath featuring quartz counters and updated flooring. A second bedroom, additional four piece bath, and convenient main floor laundry room complete this level. Downstairs, the fully developed basement offers a large family/games room with a cozy gas fireplace, two additional bedrooms (including one with a fun secret hideaway!), and the third full bathroom; making it perfect for growing families or guests. Outside, enjoy the fully fenced and landscaped yard with maintenance-free fencing, underground sprinklers, a concrete patio ready for your



future hot tub, and a covered deck with privacy glass and insulated storage underneath. Recent updates ensure peace of mind and low maintenance for years to come, including shingles (2021), AC & furnace (2024), and high-end window coverings. The oversized heated double garage offers plenty of space for vehicles, storage and hobbies. This move-in ready home truly has it all - style, comfort, and location. Don't miss your opportunity to make it yours!

Built in 2004

Essential Information

MLS® #	A2212255
Price	\$549,900
Bedrooms	4
Bathrooms	3.00
Full Baths	3
Square Footage	1,380
Acres	0.10
Year Built	2004
Type	Residential
Sub-Type	Detached
Style	Bi-Level
Status	Active

Community Information

Address	48 Sundown Court Sw
Subdivision	SW Southridge
City	Medicine Hat
County	Medicine Hat
Province	Alberta
Postal Code	T1B 4W3

Amenities

Parking Spaces	4
Parking	Concrete Driveway, Double Garage Attached, Garage Door Opener, Heated Garage

of Garages 2

Interior

Interior Features High Ceilings, Kitchen Island, Open Floorplan, Quartz Counters, Vinyl Windows, Walk-In Closet(s)

Appliances Central Air Conditioner, Dishwasher, Dryer, Garage Control(s), Microwave Hood Fan, Refrigerator, Stove(s), Washer, Window Coverings

Heating Forced Air

Cooling Central Air

Fireplace Yes

of Fireplaces 1

Fireplaces Basement, Family Room, Gas

Has Basement Yes

Basement Finished, Full

Exterior

Exterior Features Other

Lot Description Back Yard, Landscaped, Underground Sprinklers

Roof Asphalt Shingle

Construction Stucco

Foundation Poured Concrete

Additional Information

Date Listed April 18th, 2025

Days on Market 1

Zoning R-LD

Listing Details

Listing Office REAL BROKER

Data is supplied by Pillar 9â„¢ MLSÂ® System. Pillar 9â„¢ is the owner of the copyright in its MLSÂ® System. Data is deemed reliable but is not guaranteed accurate by Pillar 9â„¢. The trademarks MLSÂ®, Multiple Listing ServiceÂ® and the associated logos are owned by The Canadian Real Estate Association (CREA) and identify the quality of services provided by real estate professionals who are members of CREA. Used under license.